

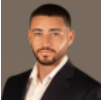
OCEANS 8 LOT 4

N.E. Coast

MLS# 420505

US\$1,197,000





Conor Crighton
 345-526-0578
 conorc@crightongroup.com

Set along the unspoiled coastline of East End, this oceanfront parcel offers the opportunity to build in one of Grand Cayman’s most naturally beautiful settings within the private Oceans 8 subdivision, an exclusive eight-lot residential enclave designed to preserve privacy, quality, and long-term value.

Here, the pace slows. The views open wide. And the sound of the sea becomes part of everyday life.

Positioned directly on the water, the property captures the essence of true island living — sunrise views, constant ocean breezes, and uninterrupted horizons. Owners benefit from access to maintained roadways and common areas, including a shoreline pathway and beach access along the ironshore frontage, with a dedicated boardwalk currently being constructed to enhance convenient access to the sea.

Oceans 8 is structured as a luxury single-family development with architectural standards in place to ensure cohesive, high-quality residences throughout. With only eight homesites and a managed homeowners association overseeing common areas and shared amenities, this is a rare opportunity to build within a protected, low-density oceanfront setting.

East End is known for its authenticity, privacy, and strong sense of community, while still remaining within comfortable reach of restaurants, dive sites, supermarkets, and daily conveniences.

Whether envisioned as a private retreat or a thoughtfully designed oceanfront residence, this parcel offers a rare chance to secure frontage in a development where natural beauty and thoughtful planning work together to protect both lifestyle and investment.

Property Features

Type Land (For Sale)	Status Current	View Ocean Front
Listing Type Low Density Residential	Width 61.50	Depth 279.50
Sq Ft 0.00	Block/Parcel 69A / 61LOT4	Area 70
Acres 0.61		

Building Features

City Water
Yes

Additional Features

Road Surface Asphalt	How Shown By Appointment/List	Soil Rock	Topography Sloping
Zoning Low Density residential	Road Frontage 61.5	Trees Clusters	Title Freehold
Frontage Road City Maintained	Possession At Completion	Land Certificate Not Issued	Covenants Yes