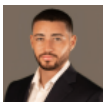


LALIQUE POINTE WATERFRONT LOT

W Bay Bch North

MLS# 415581

CI\$1,988,000



Conor Crighton

345-526-0578

conorc@crightongroup.com



Dale Crighton

345-949-5250

dalec@crightonproperties.com

Located within one of the most exclusive gated neighborhoods along the Seven Mile Beach Corridor, this 0.60 acre water front lot offers breathtaking views of Governor's Harbour as well as views of the North Sound from a second level. Lalique Pointe is the pinnacle of exclusivity within Crystal Harbour offering lush landscaped areas, strict covenants and neighborhood amenities which include a community soccer pitch, tennis and pickle ball courts, a private marina and access to the Lalique Pointe clubhouse. Photos courtesy of www.caymanlandinfo.ky.

Property Features

Type
Land (For Sale)

Status
Pen/Con

View
Water Front

Listing Type Low Density Residential	Width 120.00	Depth 240.00
Sq Ft 0.00	Block/Parcel 17A / 182	Area 20
Acres 0.6		

Building Features

City Water
Yes

Additional Features

Road Surface Asphalt	Soil Marl	Topography Filled	Zoning Low Density residential
Road Frontage 350	Trees Clusters	Title Freehold	Frontage Road Private
Possession At Closing	Land Certificate Not Issued	Covenants Yes	